



Divisions of **ase** Industries, Inc.

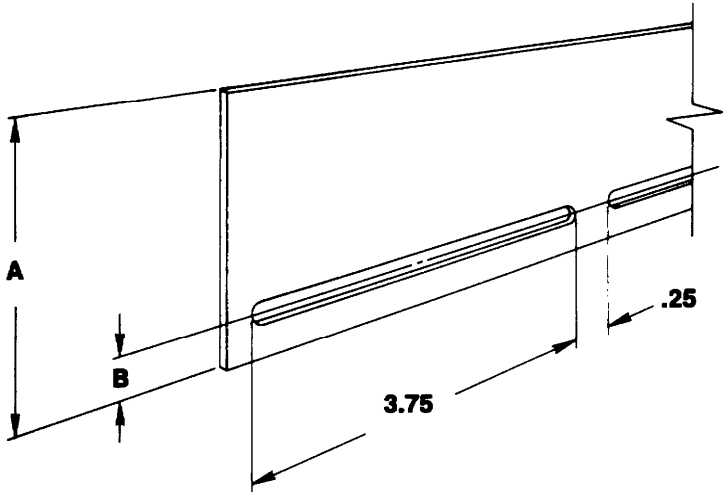
# PARTS CATALOG



*For Continuous Customer Service*

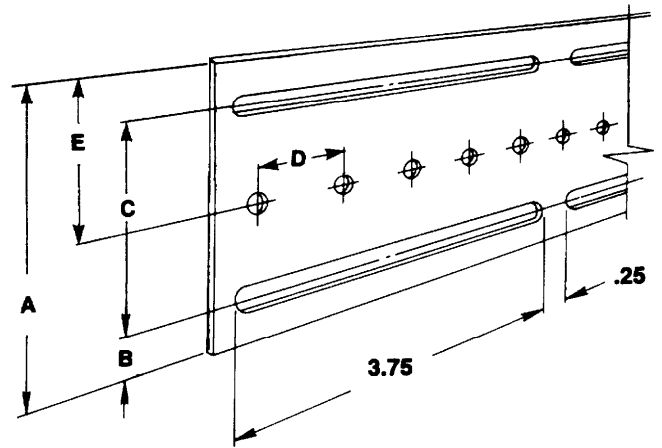
Registered to ISO 9001 Compliant to QS-9000 T&E Supplement

# STANDARD RAILS



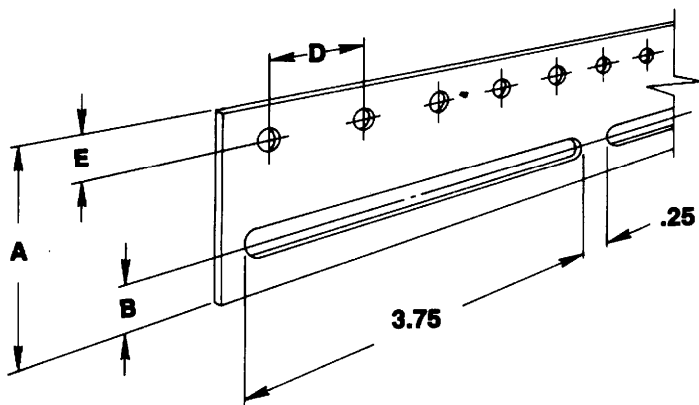
### ORDERING EXAMPLE:

1000 ft. #S100009 BTSS B = .50 .343 slot  
 1000 ft. #S100001 S.S. B = .38 .281 slot



### ORDERING EXAMPLE:

700 ft. #S100009 BTSS B = .50 C = 3.50  
 E = 3.00 D = .875  
 .343 slots, .255 hole  
 100 ft. #S100012 BTSS B = .50 C = 4.00  
 E = 4.50 D = 1.00  
 .343 slots, .255 hole



### ORDERING EXAMPLE:

600 ft. #S100007 BTSS B = .75 E = 1.50  
 D = .875 .406 slot, .255 hole  
 400 ft. #S100004 S.S. B = .50 E = .38  
 D = .625 .343 slot, .170 hole

| MATERIAL                   | IDENTIFICATION CODE |
|----------------------------|---------------------|
| Blue Tempered Spring Steel | B.T.S.S. (RC46-48)  |
| Stainless Steel            | S.S.                |

### STANDARD RAIL SIZES (Blue Tempered Spring Steel)

| case NO. | "A" DIM.    | case NO. | "A" DIM.     |
|----------|-------------|----------|--------------|
| S100001  | .062 x 1.00 | S100009  | .062 x 4.50  |
| S100002  | .062 x 1.25 | S100010  | .062 x 5.00  |
| S100003  | .062 x 1.50 | S100011  | .062 x 5.50  |
| S100004  | .062 x 2.00 | S100012  | .062 x 6.00  |
| S100005  | .062 x 2.50 | S100013  | .062 x 6.50  |
| S100006  | .062 x 3.00 | S100014  | .062 x 7.00  |
| S100007  | .062 x 3.50 | S100016  | .062 x 8.00  |
| S100008  | .062 x 4.00 | S100020  | .062 x 10.00 |

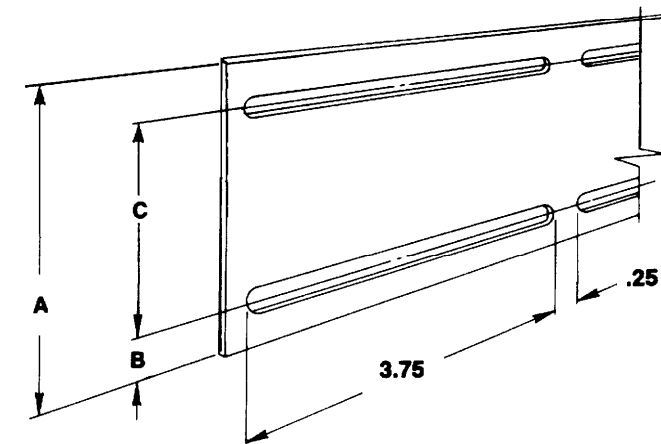
Note: Some sizes are also available in .032 thick and .094 thick material.

### General Notes

**SLOTS:** .281 x 3.750 Lg (for 1/4" dia. bolts)  
 .343 x 3.750 Lg (for 5/16" dia. bolts)  
 .406 x 3.750 Lg (for 3/8" dia. bolts)

**HOLES:** .170 DIA. (for #8 bolt)  
 .190 DIA. (for #10 bolt)  
 .255 DIA (for 1/4" bolt)  
 .380 DIA. (for 3/8" bolt)

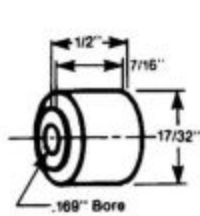
**B Dim.** (any increment in 1/32") Min. dim. .375  
**E Dim.** (any increment in 1/32")  
**D Dim.** to be determined by minimum 3 to 5 bearing contact .



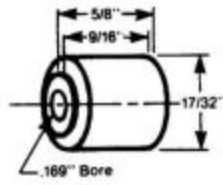
### ORDERING EXAMPLE:

500 ft. #S100008 BTSS B = .50 C = 3.00 .406 slot  
 900 ft. #S100012 S.S. B = .62 C = 4.75 .343 slot

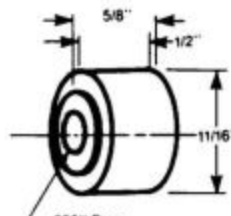
# STANDARD UNGROUND ROLLER BEARINGS



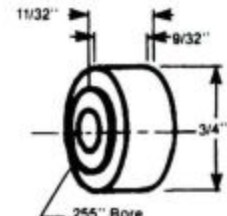
C100303



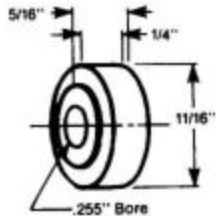
C100304



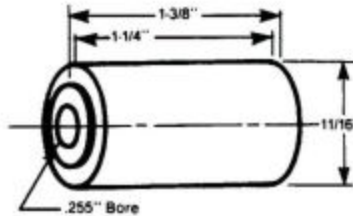
C100310



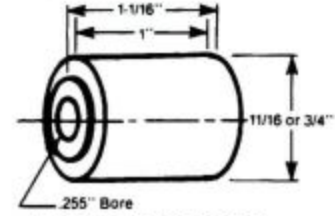
C100302



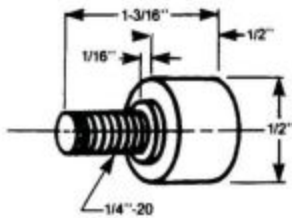
C100307



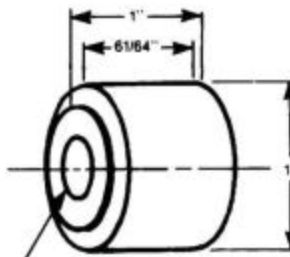
C100327



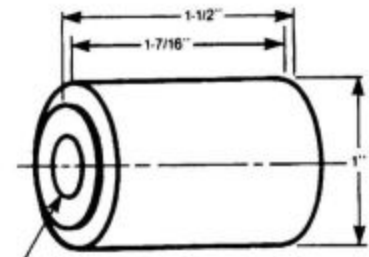
11/16" OD C100312  
3/4" OD C100317



C100335

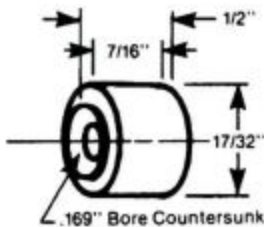


C100324

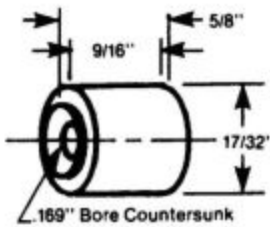


C100326

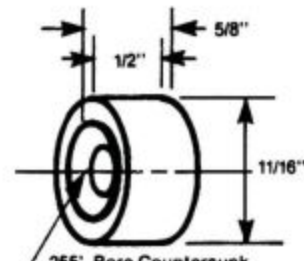
# UNGROUND COUNTERSUNK BEARINGS



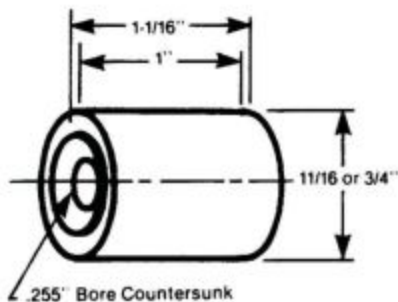
C100328



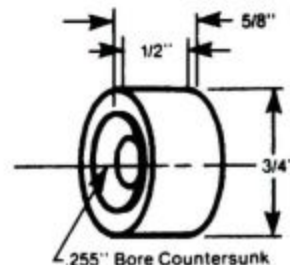
C100329



C100338



11/16" OD C100330  
3/4" OD C100332



C100331

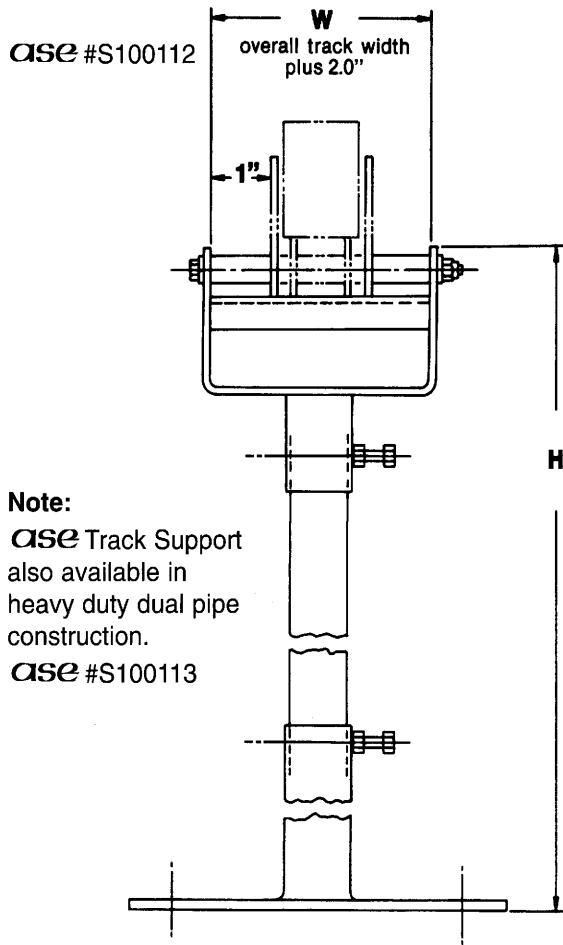
## ORDERING EXAMPLE:

250 #C100312 Roller Bearings

Note: Some bearings are also available, in stainless steel or with a nylon outer race.

# FASTENING AND SUPPORT COMPONENTS

## STANDARD FLOOR MOUNTED TRACK SUPPORT

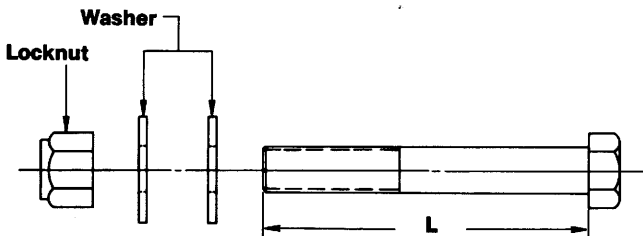


### ORDERING EXAMPLE:

10 #S100112 Track support W = 5.06 H = 36.00  
 Slot = 13/32 Paint = Safety yellow

## STANDARD HEX HEAD BOLT SETS

Bolt set includes (1) bolt, (2) plain washers and (1) locknut

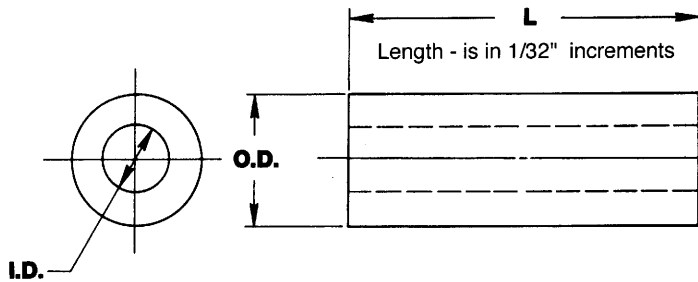


### ORDERING EXAMPLE:

400 #S100110 Screw sets L = 3.50

| <i>ase</i> No. | THREAD  | L   |
|----------------|---------|---|
| S100107        | #8-32   | Under 1" Length, 1/8" Increments<br>1" To 4" Length, 1/4" Increments<br>Over 4" Length, 1/2" Increments |
| S100108        | #10-32  |   |
| S100109        | 1/4-20  |   |
| S100110        | 5/16-18 |   |
| S100111        | 3/8-16  |   |

## STANDARD ALUMINUM SPACERS



### ORDERING EXAMPLE:

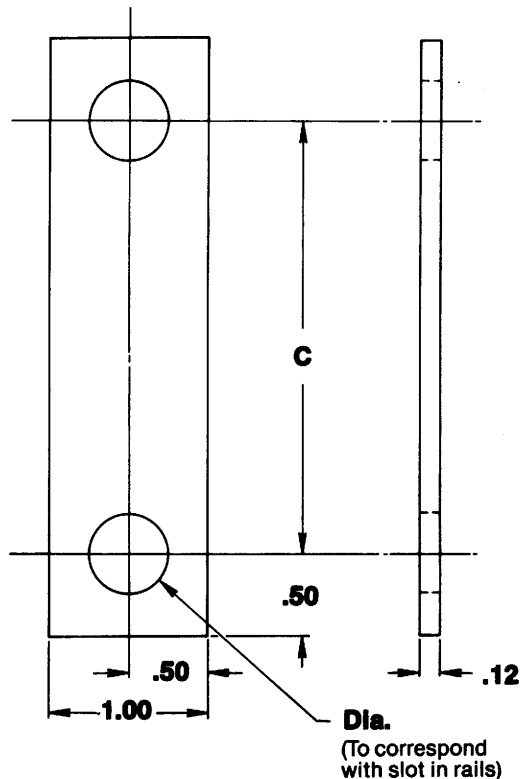
500 #S100101 Aluminum Spacer L = 3.750

| <i>ase</i> NO. | O.D. | I.D. |
|----------------|------|------|
| S100101        | .375 | .188 |
| S100102        | .500 | .281 |
| S100103        | .625 | .281 |
| S100104        | .625 | .344 |
| S100106        | .750 | .406 |

**Note:** Depending on quantity ordered *ase* reserves the right to ship sizes over 1" Lg. in (2) pc. combinations.

## STANDARD PART RETAINER STRAPS

*ase* #S100120



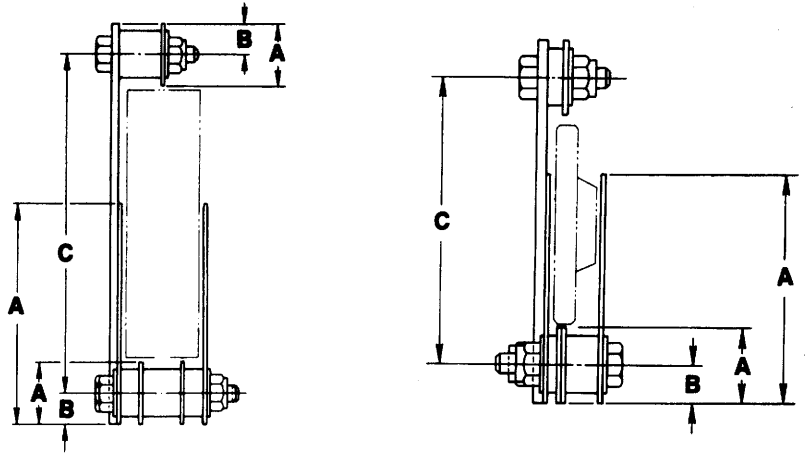
### ORDERING EXAMPLE:

200 #S100120 Retainer Straps C = 4.125, .343 dia. holes

# ROLLING OR SLIDING... SUIT YOUR PARTS MOVING NEEDS

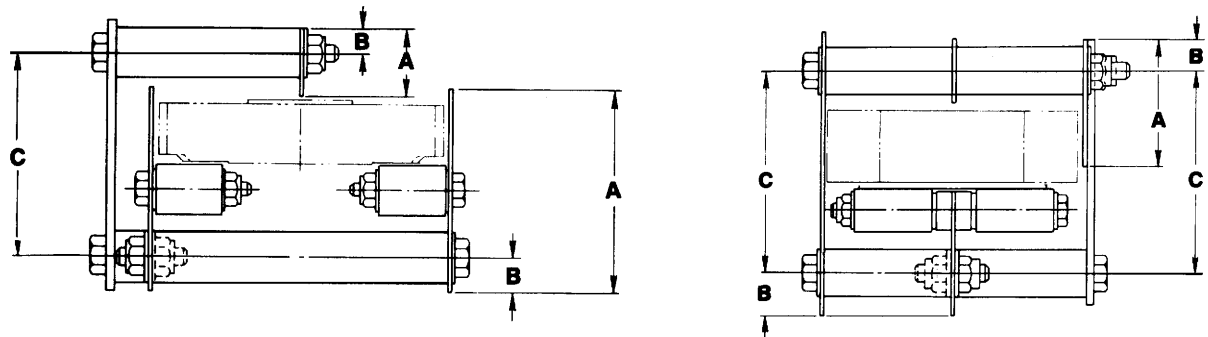
## RIDE RAIL TRACKING

Parts that will roll can be conveyed by gravity in an *ase* standard track section.



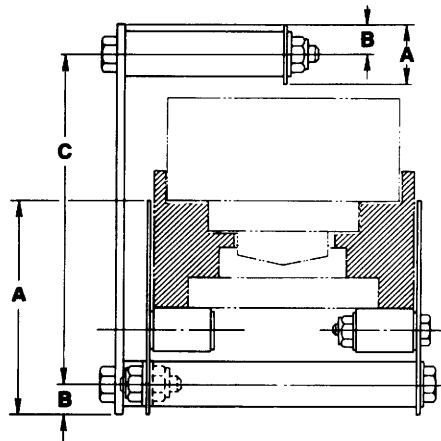
## ROLLER BEARING TRACKING

Parts that cannot be rolled (due to configuration, and/or critical surfaces) can be conveyed by gravity in an *ase* standard track section with parts sliding on roller bearings. (3 to 5 bearings minimum should contact part)



## PALLETIZING

All parts that cannot be conveyed either by rolling and/or sliding on roller bearings, can be conveyed in pallets which allow simple design of standard tracks to solve difficult handling conditions.



## DESIGN NOTES:

When designing *ase* "Guide-O-Flex" standard tracking, the following guide can be helpful:

### Parts rolling or parts sliding on roller bearings:

Up to 2 lbs.-1"-1.50"/ft. pitch.

2 lbs. & over-under 1"/ft. pitch.

Note: These pitch dimensions will vary depending on part configurations.

### Part Retainer Rail

Part retainer rail is recommended for tracking that is to be installed 5'-6' above floor. Also recommended to prevent shingling of sliding parts and/or bubbling of rolling parts where excessive back pressure could exist.

*ase* will develop a track cross-section and provide cost to accommodate your work piece. A dimensional sketch, part print or actual work piece is all the information we require.

| Part under 2 lbs. | 2 lbs. to 8 lbs. | Over 8 lbs. |
|-------------------|------------------|-------------|
| 1/4-20 bolt       | 5/16-18 bolt     | 3/8-16 bolt |